

from *Where Did Our Love Go*

Baby Love

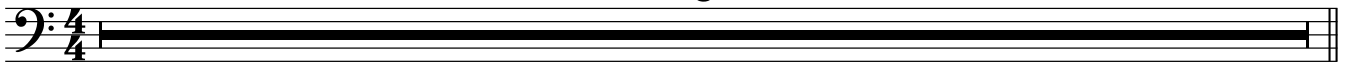
Released in 1964

Words and Music by
Brian Holland
Lamont Dozier
Edward Holland

Intro

Moderately ♩ = 120 (♩ = $\overset{\frown}{\text{♩}} \overset{\frown}{\text{♩}} \overset{\frown}{\text{♩}}$)

6



Verse

Verse bass line with chords: C, C⁷/B^b, A⁷, Dm, Dm⁷, C, F⁶, C, F⁶, C, *To Coda* F, Em, 1. Dm⁷ G⁷, 2. Dm⁷ G⁷.

Interlude


Interlude bass line with chords: C, C⁷/B^b, A⁷, Dm, Dm⁷, C, F⁶, C, F⁶, C, F⁶, C, F, Em, Dm⁷, *D.S. al Coda* G⁷ (no repeat).

Chord progression: F, Em, Dm⁷, G⁷, D^b.

Verse

Verse bass line in B^b major with chords: D^b, D^b⁷/C^b, B^b⁷, E^bm, E^bm⁷, D^b, G^b⁶, D^b.

Chords: Gb⁶ Db Gb Fm Ebm⁷ Ab⁷



Verse

Chords: Db Db⁷/Cb Bb⁷ Ebm



Chords: Ebm⁷ Db Gb⁶ Db



Chords: Gb⁶ Db Gb Fm Ebm⁷ Ab⁷



Verse

Chords: Db Db⁷/Cb Bb⁷ Ebm



Chords: Ebm⁷ Db *Begin Fade* Gb⁶ Db *Fade Out*

